



GENERAL FEATURES

- Rack size **60x50 cm**
- Gross weight: 81 Kg
- Wash cycles/racks per hour: 90"-120"-180"-9"/40-30-20-7
- Stainless-steel wash/rinse arms
- Wash pump: 680 W
- Boiler capacity: 5,5 liters
- Tank capacity: 20 liters
- Boiler heating element: 6 kW
- Tank heating element: 2,4 kW
- Water consumption per cycle: 2 liters
- Electronic controls with LCD display
- Useful washing height: 380 mm
- Magnetic door microswitch
- Automatic water filling
- Double electric detergent and rinse-aid dispenser
- Hot rinse
- Thermostop function
- PRS system (Atmospheric boiler+break tank+rinse pump)
- Built-in drain pump
- SD System (Smart Drain)
- Green function for energy saving
- Automatic end-of-day self-cleaning of wash tank
- Washing pump with "soft-start"

FILTRATION

- Plastic wash pump filter, easily removable

BODY

- AISI 304 stainless steel body
- Double skinned body
- Preformed wash tank
- Preformed rack guides
- Door handle in s/s
- Wash/rinse arms in s/s, easily removable
- Boiler in s/s AISI 316

EQUIPMENT

- 1 glass rack 60x50 cm
- 1 plate rack 60x50 cm
- 1 cutlery small basket
- 1 inlet hose (2 mt length)
- 1 drain hose (2,5 mt length)

OPTIONS

- Hot water filling (max 85°C)
- HD version (Tot. P. 9,08 kW in 380-415V 3N~50Hz)
- 60Hz version
- Kit high feet
- Kit surface filters

ACCESSORIES FOR THE WATER TREATMENT

- Built-in water softener ("S" version)
- External water softener

ACCESSORIES

- Special racks
- S/S stand height 550 mm

INSTALLATION

- Use the screws of the feet and a spirit level to ensure that the machine is levelled

MAIN POWER SUPPLY

- The voltage of main power supply must be compatible with the rated voltage
- The machine must be connected to a suitable earth (ground) system
- Connect the machine power socket to the multi-pole wall switch provided

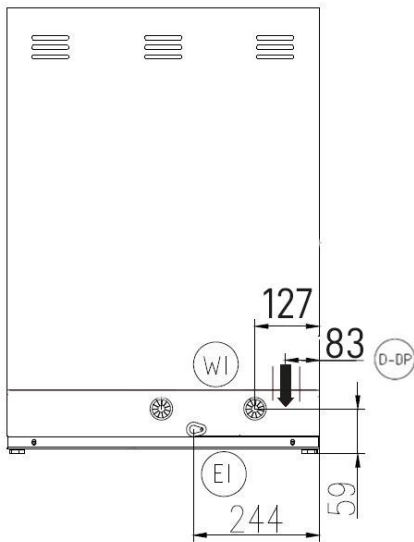
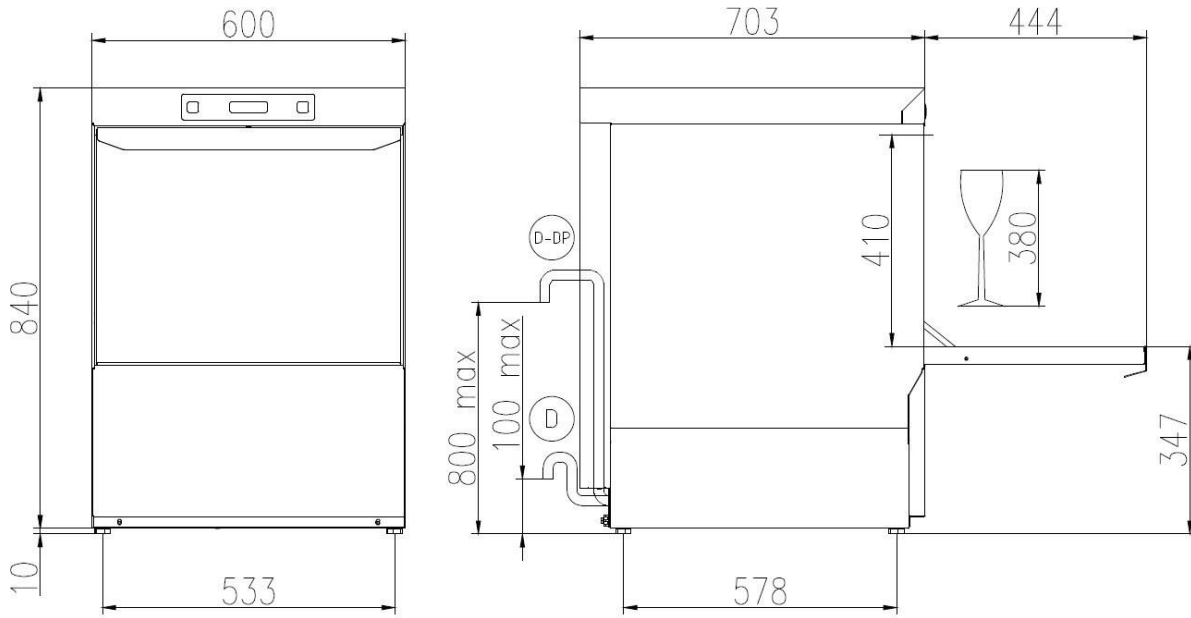
WATER SUPPLY CONNECTION

- A water softener must be installed if the water is hard
- The water pressure must be between 0.1MPa (1 bar) and 0.5MPa (5 bar)
- The temperature of the water supply must be between 10°C to 50°C (max 25°C with water softener)

TECHNICAL SPECIFICATIONS

- Electrical supply: **380-415V 3N / 220-240V3 / 220-240V ~ 50Hz**
- Total power: **6,68 kW (9,08 kW in HD)**
- Absorbed current: **12 A / 18 A / 30 A (22 A in HD)**
- Power cord supply size: **5 x 2,5 mm² / 3 x 4 mm²**

AS 60.35^E PRS SD



- EI CAVO DI ALIMENTAZIONE
POWER CORD SUPPLY
CABLE D'ALIMENTATION
CABLE DE ALIMENTACION
- WI CANNA DI CARICO G 3/4 L=2000 mm
G 3/4 INLET HOSE L=2000 mm
TUYAU D'ALIMENTATION G 3/4" L=2000 mm
TUBO DE ALIMENTACION G 3/4" L=2000 mm
- D TUBO DI SCARICO ϕ 29 mm L=2500 mm
DRAIN HOSE ϕ 29 mm L=2500 mm
TUYAU DE VIDANCE ϕ 29 mm L=2500 mm
TUBO DE DESAGUE ϕ 29 mm L=2500 mm
- D-DP TUBO DI SCARICO ϕ 29 mm L=2500 mm (CON POMPA SCARICO)
DRAIN HOSE ϕ 29 mm L=2500 mm (WITH DRAIN PUMP)
TUYAU DE VIDANCE ϕ 29 mm L=2500 mm (AVEC POMPE DE VIDANCE)
TUBO DE DESAGUE ϕ 29 mm L=2500 mm (CON POMPA DE DESAGUE)

	Min 10°C-MAX 50°C
	Min 10°C-MAX 25°C with ENERGY RECOVERY
	200÷500kPa(2÷5 Bar)
	100÷500kPa(1÷5 Bar) with ATMOSPHERIC BOILER
	HARDNESS 5÷20'f-2.8÷11'd